

Practice Test

CompTIA A+ 220-802 Domain 1 - Operating Systems

Brought to you by RMRoberts.com

The CompTIA A+ 220-802 certification test is much more in-depth than the CompTIA A+ 220-801. This is the first of a four-part series of practice tests for the 220-802. It is **strongly recommended** that you first complete the study guide (CompTIA A+ 220-802 Domain 1) located at this link, before attempting this practice test.

The 220-802 domain 1 Practice Test consists of 33 questions. You need to score at least 80 percent of 26 correct answers to consider yourself prepared.

1. Which is the correct file structure path by default for the “My Documents” folder for a user named Student1? Assume the operating system is Windows7?
 - A. C:/Winodws/Student1/My Documents
 - B. C:/AllUsers/Student1/Library/Documents
 - C. C:/Users/Student1/My Documents
 - D. C:/Windows/MyDocuments/Student1
2. Which operating system supports the Windows “XP Mode”? (Select all that apply.)
 - A. Windows Vista
 - B. Windows XP
 - C. Windows 7
 - D. Windows 8
3. Which Microsoft Windows tool is used to create a disk image?
 - A. Backup and Restore
 - B. Msconfig
 - C. Robocopy
 - D. Computer Management
4. Which type of installation requires sysprep tool?
 - A. Clean install
 - B. System upgrade
 - C. System migration
 - D. Unattended installation

5. Which is the correct order for installation of a multiboot system using Windows Vista and Windows 7 operating system? Assume that the hard disk drive has been prepared with two partitions. The first partition is primary partition C:, and the second partition is D:.
 - A. Install Vista on the primary partition C: and then perform a clean installation of Windows 7 on C:.
 - B. Install Windows 7 on the primary partition C: and then install Vista on the second partition D:.
 - C. Install Windows Vista on the second partition D: and then install Windows 7 on the primary partition C:.
 - D. Install Vista on Primary partition C: and then install Windows 7 on partition D:.

6. What command is used to convert partition D: which is fat32 partition into an ntfs file system?
 - A. Convert D:/fs:ntfs
 - B. C: convert D:/ntfs
 - C. Convert FAT32 NTFS
 - D. Convert NTFS D:fat32

7. Which command line tool will verify network connection through several routers across the Internet and provide time required for each hop?
 - A. Ping
 - B. Tracert
 - C. Nslookup
 - D. Net View

8. Which command line tool will check and verify the integrity of system files and replace if necessary?
 - A. Bootrec
 - B. Sfc
 - C. Fixboot
 - D. Fxldr

9. Which system tool can be used to temporarily disable certain programs from running at system startup?
 - A. Sysprep
 - B. Sysconfig32
 - C. Msconfig
 - D. Mstsc

10. Which command entered into the search text box will start a remote desktop connection?
- A. Remote
 - B. Mstsc
 - C. Regedit
 - D. Services
11. Which operating system first introduced HomeGroup?
- A. Windows XP
 - B. Windows Vista
 - C. Windows 7
 - D. Windows 8
12. Which operating system first introduced the Windows Action Center?
- A. Windows XP
 - B. Windows Vista
 - C. Windows 7
 - D. Windows 8
13. Which power setting saves your work to the hard drive and takes the longest period to wake?
- A. Hibernation
 - B. Suspend
 - C. Sleep
 - D. Pause
14. Which tab in Internet Options do you use to change the default home page address for Microsoft Internet Explorer?
- A. General
 - B. Security
 - C. Connections
 - D. Privacy
15. Under which tab in Internet Options do you access the Parental Controls feature and configuration?
- A. General
 - B. Security
 - C. Privacy
 - D. Content

16. Which file types are changed when performing a system restore? (Select all that are correct.)
- A. Email contents
 - B. Programs
 - C. System files
 - D. Register settings
17. Which is not a user account type?
- A. Administrator
 - B. Guest
 - C. Standard
 - D. Primary
18. What is the primary function of the DXDIAG tool?
- A. To detect network connection problems.
 - B. Check the system registry for errors.
 - C. Check multimedia features.
 - D. Check partition fragmentation.
19. How do you access the User Account Control (UAC) Group Policy settings through the Search dialog box?
- A. Click Start, type secpol.msc in the Search programs and files box, and then press ENTER.
 - B. Click Start, type poledit.msc in the Search programs and files box, and then press ENTER.
 - C. Click Start, type firewall in the Search programs select Policy from the menu list.
 - D. Click Start, type security.exe in the Search programs then select Firewall option.
20. Which is the best definition of a system image created in Windows system backup?
- A. A copy of all drivers that are required to boot the computer system.
 - B. An exact copy of an entire drive or partition.
 - C. A copy of the operating system without user documents and settings.
 - D. An exact copy of all required system files and drivers excluding user files.
21. What is NOT shared by default when joining a Windows HomeGroup?
- A. Printer
 - B. Pictures
 - C. Music
 - D. Documents

22. What is the default workgroup name for Windows 7?

- A. HomeGroup
- B. Workgroup
- C. Domain
- D. Windows7

23. What does the acronym DNS represent?

- A. Domain Network System
- B. Domain Name System
- C. Dominant Network System
- D. Domain Network Services

24. Which is the correct path to Windows Update?

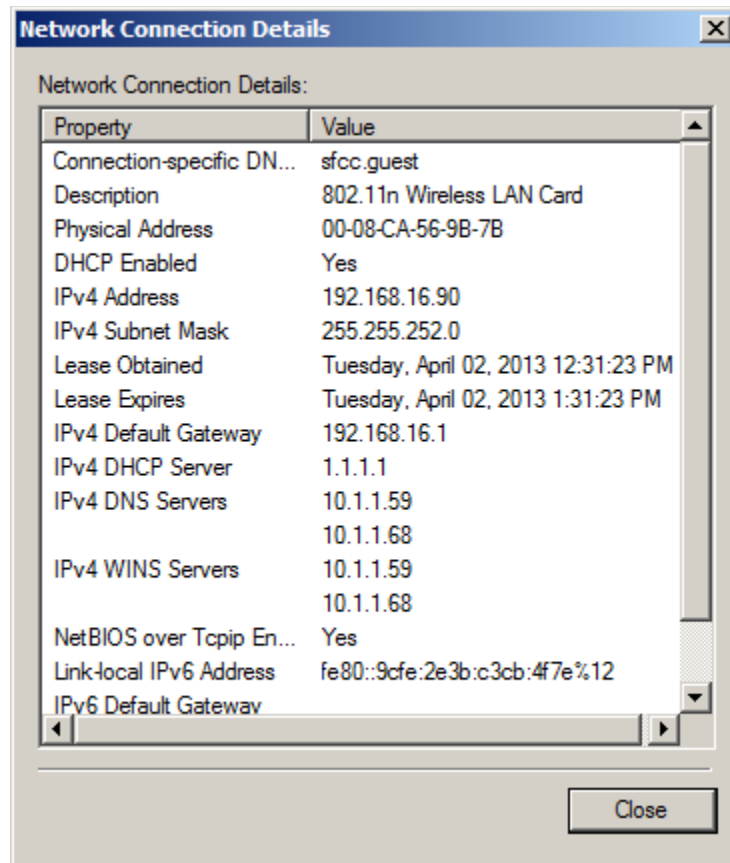
- A. Start then right-click Computer and then select Updates.
- B. Start then right-click Computer and then select Manage.
- C. Start then select All Programs then select Windows Update.
- D. Start then select All Programs then select Accessories then select Updates.

25. What are the three network locations associated with Network and Sharing Center?

- A. Home, Office, and Public.
- B. Home, Work, and Public.
- C. Home, School, Public.
- D. Home, Public, and Domain.

(continued next page)

26. What is true about the network connection based on the screen capture of the network adapter details?



- A. The network is connected using 100BaseT type connection.
- B. The computer is connected to the network using a private IP4 address.
- C. The computer is connected to the network using a public IPv4 address.
- D. The computer cannot establish a connection with the DNS server.

27. Which port number is associated with Windows SMB file sharing?

- A. 55
- B. 110
- C. 445
- D. 1033

28. You are performing a remote network operating system installation across a network. The target machine has no OS installed on the hard drive. Which is required to be at the target machine to start the operating system installation?
- A. DVD drive.
 - B. PXE
 - C. A copy of Microsoft Office
 - D. Notepad
29. What task must be performed first after physically adding a new additional hard disk drive to a Windows 7 computer?
- A. The hard disk drive must be assigned a drive letter.
 - B. The hard disk drive must be initiated.
 - C. The hard disk drive must be formatted.
 - D. The hard disk drive must be erased.
30. How many hard disk drives are required for a disk mirror?
- A. Two
 - B. Three
 - C. Five
 - D. Only one
31. Which network system provides the most secure connection between two computers across the Internet?
- A. 801.11a
 - B. 802.11g
 - C. VPN
 - D. Workgroup membership
32. Which subnet mask is associated with a class B network?
- A. 255.255.255.000
 - B. 255.255.000.000
 - C. 000.000.255.255
 - D. 254.254.254.000
33. Which symbol is used to indicate administrative shares?
- A. Green exclamation
 - B. Yellow triangle
 - C. A dollar sign
 - D. Administrative files appear in green letters

Answers

1. Which is the correct file structure path by default for the “My Documents” folder for a user named Student1? Assume the operating system is Windows7.

C. C:/Users/Student1/My Documents

2. Which operating system supports the Windows “XP Mode”? (Select all that apply.)

C. Windows 7

3. Which Microsoft Windows tool is used to create a disk image?

A. Backup and Restore

4. Which type of installation requires sysprep tool?

D. Unattended installation

5. Which is the correct order for installation of a multiboot system using Windows Vista and Windows 7 operating system? The hard disk drive has been prepared with two partitions. The first partition is primary partition C: and the second partition is D:.

D. Install Vista on Primary partition C: and then install Windows 7 on partition D:.

6. What command is used to convert partition D: which is fat32 partition into an ntfs file system?

A. Convert D:/fs:ntfs

7. Which command line tool will verify network connection through several routers across the Internet and provide time required for each hop?

B. Tracert

8. Which command line tool will check and verify the integrity of system files and replace if necessary?

B. Sfc

9. Which system tool can be used to temporarily disable certain programs from running at system startup?

C. Msconfig

10. Which command entered into the search text box will start a remote desktop connection?

B. Mstsc

11. Which operating system first introduced HomeGroup?

C. Windows 7

12. Which operating system first introduced the Windows Action Center?

C. Windows 7 (New Windows 7 Action Center (formerly known as Solutions Center))

13. Which power setting saves your work to the hard drive and takes the longest period to wake?

A. Hibernation

14. Which tab in Internet Options do you use to change the default home page address for Microsoft Internet Explorer?

A. General

15. Under which tab in Internet Options do you access the Parental Controls feature and configuration?

D. Content

16. Which file types are changed when performing a system restore? (Select all that are correct.)

B. Programs

C. System files

D. Register settings

17. Which is not a user account type?

D. Primary

18. What is the primary function of the DXDIAG tool?

C. Check multimedia features.

19. How do you access the User Account Control (UAC) Group Policy settings through the Search dialog box?

A. Click Start, type secpol.msc in the Search programs and files box, and then press ENTER.

20. Which is the best definition of a system image created in Windows system backup?

B. An exact copy of an entire drive or partition

21. What is NOT shared by default when joining a Windows HomeGroup?

D. Documents

22. What is the default workgroup name for Windows 7?

B. Workgroup

23. What does the acronym DNS represent?

B. Domain Name System

24. Which is the correct path to Windows Update?

C. Start then select All Programs, then select Windows Update.

25. What are the three network locations associated with Network and Sharing Center?

B. Home, Work, and Public

26. What is true about the network connection based on the screen capture of the network adapter details?

B. The computer is connected to the network using a private IP4 address.

27. Which port number is associated with Windows SMB file sharing?

C. 445

28. You are performing a remote network operating system installation across a network. The target machine has no OS installed on the hard drive. Which is required to be at the target machine to start the operating system installation?

B. PXE

29. What task must be performed first after physically adding a new additional hard disk drive to A Windows 7 computer?

B. The hard disk drive must be initiated.

30. How many hard disk drives are required for a disk mirror?

A. Two

31. Which network system provides the most secure connection between two computers across the Internet?

C. VPN

32. Which subnet mask is associated with a class B network?

B. 255.255.000.000

33. Which symbol is used to indicate administrative shares?

C. A dollar sign