

Domain 4 – Network Management 20 Questions 58 – 77

58. Which layer of the OSI model is responsible for routing packets based upon IPv4 addresses?

- A. Data Link
- B. Network
- C. Transport
- D. Session

59. Which layer of the OSI model uses MAC address to deliver packets correctly?

- A. Physical
- B. Data Link
- C. Network
- D. Transport

60. Which layer of the OSI model encapsulates port numbers as part of a complete frame?

- A. Presentation
- B. Session
- C. Network
- D. Transport

61. Which layer of the OSI model is responsible for CRC checks?

- A. Data Link
- B. Network
- C. Session
- D. Transport

62. At which layer of the OSI model aligns with FTP?

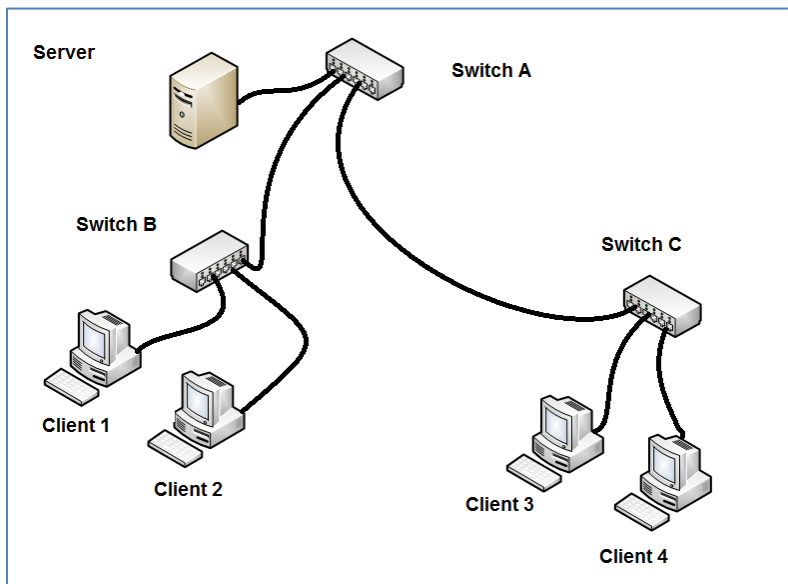
- A. Application
- B. Transport
- C. Session
- D. Network

63. When should a network system first baseline be established?

- A. During the design stage of the network before any physical cables have been installed.
- B. After all network support technicians have been hired.
- C. Approximately after the first month and then repeated every year after.

D. After the initial creation of a network system, a baseline is established again whenever a major change has taken place that might make a difference in network performance.

64. Use drawing below labeled “Net Drawing 1” for this scenario question. Client 1 and Client 2 can logon to the server. Client 3 and Client 4 cannot logon to the server. Which network device can be responsible for preventing Client 3 and Client 4 from logging on to the server?



Net Drawing 1

- A. Switch A
- B. Switch B
- C. Switch C
- D. Either Switch A or Switch C

65. Which network configuration most likely requires two or more servers?

- A. Traffic shaping.
- B. Caching Engine
- C. RAID 0
- D. Load Balancing

66. Which is one of the most common sources of VoIP problems?

- A. PC firewall blocking the packets.
- B. Traffic shaping

- C. Caching Engines
- D. Adware system infection.

67. What is most commonly used to diagnose latency problem of VoIP service?

- A. Pathping command
- B. Msconfig
- C. Protocol analyzer
- D. Oscilloscope

68. Which is a common method for correction of network attenuation?

- A. Add an additional server.
- B. Increased network cable length.
- C. Install a repeater.
- D. Replace all Cat5 cable sections with Cat5e.

69. Which work practice provides the **least** amount of security for a wireless network?

- A. Configuring all access points for 802.1x
- B. Using the default configuration of a wireless access point.
- C. Applying WAP encryption to all wireless devices.
- D. Installing only 802.11n devices.

70. Which is the most common method used to correct wireless signal bounce?

- A. Changing assigned SSID of the nearest access point.
- B. Relocating the physical location of the wireless device.
- C. Increasing the wireless device signal strength.
- D. Change the default wireless channel assignment.

71. What is the first step in the troubleshooting process?

- A. Identify what has changed?
- B. Identify symptoms and problems.
- C. Determine if escalation is necessary.
- D. Create an action plan.

72. What is the last step in the troubleshooting process?

- A. Establish the most probable cause.
- B. Implement and test the solution.
- C. Document the solution and the entire process.
- D. Identify the results and effects of the solution.

73. Which is an example of impedance mismatch?

- A. Installation and connection of two different network cable types.
- B. Installation of two different network operating systems on the same segment of a network.
- C. The connection of two different wireless devices each operating on a different wireless frequency.
- D. The connection of two different electronic audio systems with different electronic characteristics connects.

74. What is the purpose of a SNMP agent?

- A. A SNAP agent is installed on the devices that are to be monitored by the Network Management System (NMS)?
- B. A SNAP agent is installed on Network servers to upload client email.
- C. A SNAP agent is installed on network servers to download client email.
- D. A SNAP agent is installed on wireless access points to prevent encryption loss.

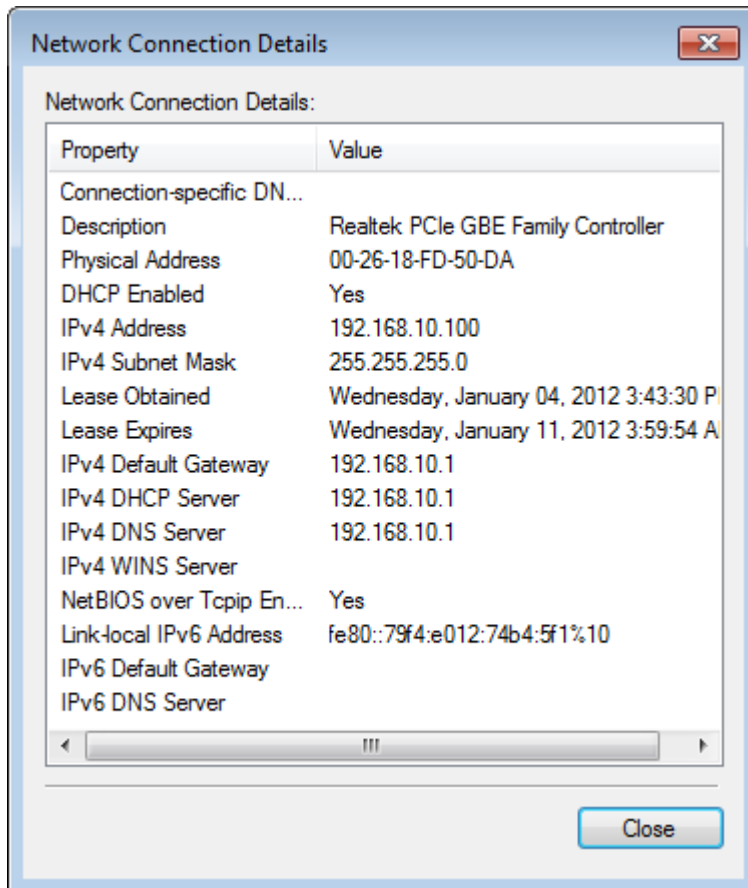
75. What is the common unit of measure for electronic equipment power loss or gain?

- A. Ohm
- B. Volt
- C. Amp
- D. Decibel

76. What symbols is used to indicate that there is no connection to the Internet when viewing the Windows 7 Network and Sharing Center dialog box?

- A. blue triangle
- B. red X
- C. yellow exclamation mark
- D. red triangle

77. Determine which statements are true based on the exhibit below of the Network Connection Details.



- A. The network adapter is configured for DHCP.
- B. The network adapter is using a private IPv4 address.
- C. The network adapter is configured using a static IPv4 address.
- D. The network adapter is using a public IPv4 address.

Answers

58. Which layer of the OSI model is responsible for routing packets based upon IPv4 addresses?

B. Network

59. Which layer of the OSI model uses MAC address to deliver packets correctly?

B. Data Link

60. Which layer of the OSI model encapsulates port numbers as part of a complete frame?

D. Transport

61. Which layer of the OSI model is responsible for CRC checks?

A. Data Link

62. At which layer of the OSI model aligns with FTP?

A. Application

63. When should a network system first baseline be established?

D. After the initial creation of a network system, a baseline is established again whenever a major change has taken place that might make a difference in network performance.

64. Use drawing labeled Net Drawing 1 for this scenario question. Client 1 and Client 2 can logon to the server. Client 3 and Client 4 cannot logon to the server. Which network device can be responsible for preventing Client 3 and Client 4 to logon to the server?

D. Either Switch A or Switch C

65. Which network configuration most likely requires two or more servers?

D. Load Balancing

66. Which is one of the most common sources of VoIP problems?

A. PC firewall blocking the packets.

67. What is most commonly used to diagnose latency problem of VoIP service?

C. Protocol analyzer

68. Which is a common method for correction of network attenuation?
- C. Install a repeater.
69. Which practice provides the least amount of security for a wireless network?
- B. Using the default configuration of a wireless access point.
70. Which is the most common method used to correct wireless signal bounce?
- B. Relocating the physical location of the wireless device.
71. What is the first step in the troubleshooting process?
- B. Identify symptoms and problems.
72. What is the last step in the troubleshooting process?
- C. Document the solution and the entire process.
73. What is impedance mismatch?
- D. The connection of two different electronic audio systems with different electronic characteristics connects.
74. What is the purpose of a SNMP agent?
- A. A SNAP agent is installed on the devices that are to be monitored by the Network Management System (NMS)?
75. What is the common unit of measure for electronic equipment power loss or gain?
- D. Decibel
76. What symbols is used to indicate that there is no connection to the Internet when viewing the Windows 7 Network and Sharing Center dialog box?
- B. red X
77. Determine which statements are true based on the exhibit below of the Network Connection Details.
- A. The network adapter is configured for DHCP.
- B. The network adapter is using a private IPv4 address.